

STANDARD DEPARTURE CHART-
INSTRUMENT (SID)-ICAO

TRANSITION ALTITUDE
8000 FT

APP	127.300
RADAR	127.300
TWR	118.100, 121.900
GND	121.700
ATIS	126.400

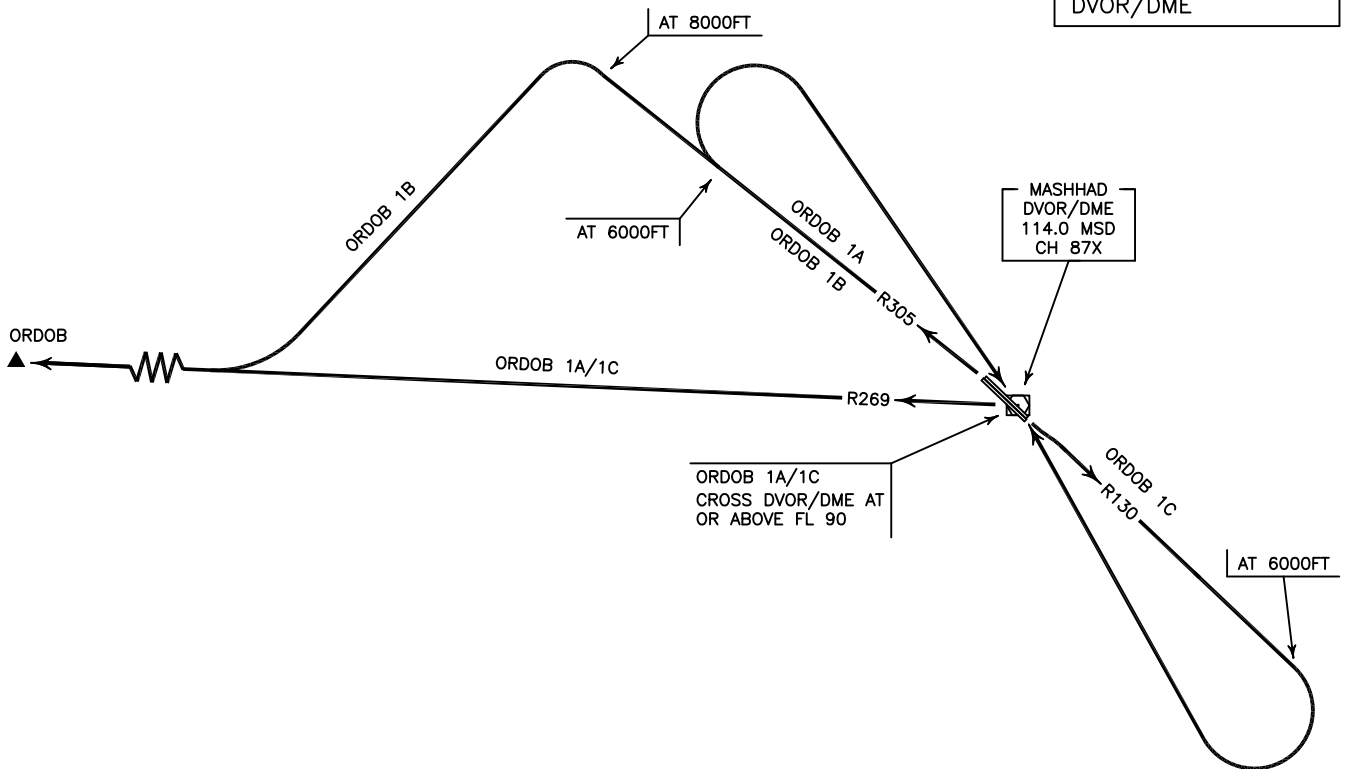
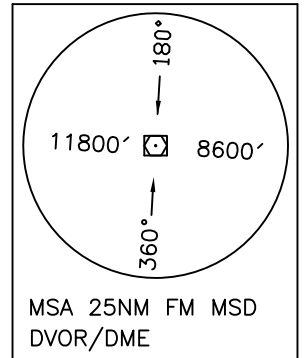
MASHHAD/
SHAHID HASHEMI NEJAD
RWY 13L/R, 31R/L
ORDOB 1A/1B/1C

ALL DIRECTIONS ARE MAGNETIC.
LEVEL AND ELEVATIONS ARE IN FEET.
DISTANCES ARE IN NAUTICAL MILES.

TMA above FL200 class "A",
at FL 200 and below class "C".
CTR and ATZ class "D".



NOT TO SCALE



ORDOB 1A DEP:

DEP RWY 31R/L - After take off climb on RDL 305 to 6000 FT, then turn right to cross overhead MSD DVOR/DME at or above FL 90, then turn right to intercept RDL 269 to ORDOB and climb to cleared level.

ORDOB 1B DEP:

DEP RWY 31R/L - After take off climb on RDL 305 to 8000 FT, then turn left to intercept RDL 269 to ORDOB and climb to cleared level.

MNM rate of climb 250 FT/NM.

ORDOB 1C DEP:

DEP RWY 13L/R - After take off climb on RDL 130 to 6000 FT, then turn right to cross overhead MSD DVOR/DME at or above FL 90, then intercept RDL 269 to ORDOB and climb to cleared level.