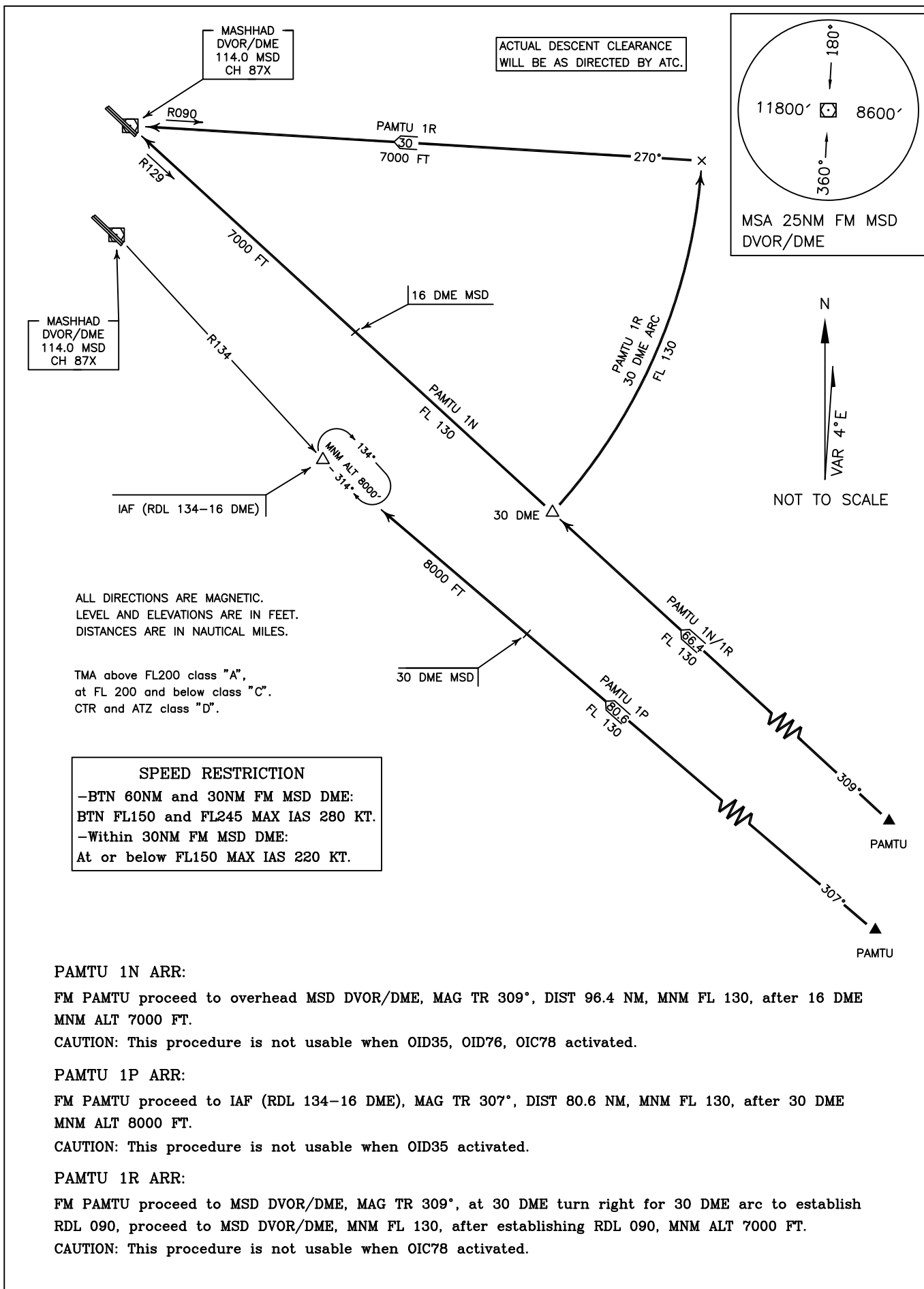


STANDARD ARRIVAL CHART-
INSTRUMENT (STAR)-ICAO

TRANSITION ALTITUDE
8000 FT

APP	127.300
RADAR	127.300
TWR	118.100, 121.900
GND	121.700
ATIS	126.400

MASHHAD/SHAHID HASHEMI NEJAD
RWY 13L/R, 31R/L
PAMTU 1N/1P/1R



ALL DIRECTIONS ARE MAGNETIC.
LEVEL AND ELEVATIONS ARE IN FEET.
DISTANCES ARE IN NAUTICAL MILES.

TMA above FL200 class "A",
at FL 200 and below class "C".
CTR and ATZ class "D".

SPEED RESTRICTION
-BTN 60NM and 30NM FM MSD DME:
BTN FL150 and FL245 MAX IAS 280 KT.
-Within 30NM FM MSD DME:
At or below FL150 MAX IAS 220 KT.

PAMTU 1N ARR:

FM PAMTU proceed to overhead MSD DVOR/DME, MAG TR 309°, DIST 96.4 NM, MNM FL 130, after 16 DME MNM ALT 7000 FT.

CAUTION: This procedure is not usable when OID35, OID76, OIC78 activated.

PAMTU 1P ARR:

FM PAMTU proceed to IAF (RDL 134-16 DME), MAG TR 307°, DIST 80.6 NM, MNM FL 130, after 30 DME MNM ALT 8000 FT.

CAUTION: This procedure is not usable when OID35 activated.

PAMTU 1R ARR:

FM PAMTU proceed to MSD DVOR/DME, MAG TR 309°, at 30 DME turn right for 30 DME arc to establish RDL 090, proceed to MSD DVOR/DME, MNM FL 130, after establishing RDL 090, MNM ALT 7000 FT.

CAUTION: This procedure is not usable when OIC78 activated.