

STANDARD ARRIVAL CHART-  
INSTRUMENT (STAR)-ICAO

TRANSITION ALTITUDE  
4000 FT

TWR 122.700, 121.900  
ATIS 126.200

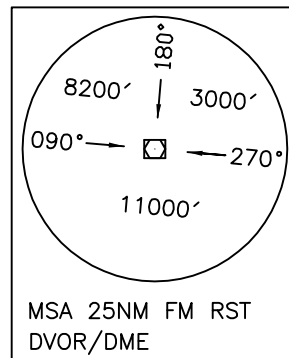
RASHT/SARDAR-E-JANGAL  
RWY 09/27  
RARTA 1Q  
DEDLA 1Q

ALL DIRECTIONS ARE MAGNETIC,  
LEVEL AND ELEVATIONS ARE IN FEET,  
DISTANCES ARE IN NAUTICAL MILES.

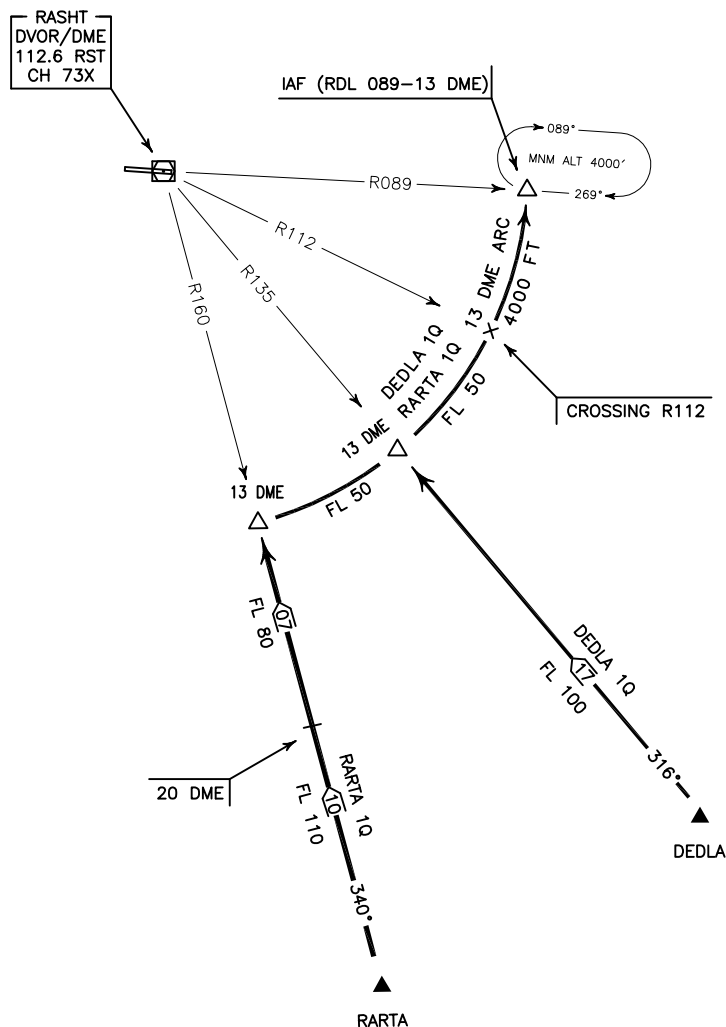
CTR class "D".



NOT TO SCALE



ACTUAL DESCENT CLEARANCE  
WILL BE AS DIRECTED BY ATC.



**RARTA 1Q ARR:**

FM RARTA proceed to IAF (RDL 089-13 DME), MAG TR 340°, at 13 DME turn right for 13 DME ARC to IAF, MNM FL 110 up to 20 DME, MNM FL 80 up to 13 DME, MNM FL 50 up to crossing RDL 112 then MNM ALT 4000 FT.

**DEDLA 1Q ARR:**

FM DEDLA proceed to IAF (RDL 089-13 DME), MAG TR 316°, at 13 DME turn right for 13 DME ARC to IAF, MNM FL 100 up to 13 DME, MNM FL 50 up to crossing RDL 112 then MNM ALT 4000 FT.