

STANDARD ARRIVAL CHART-  
INSTRUMENT (STAR)-ICAO

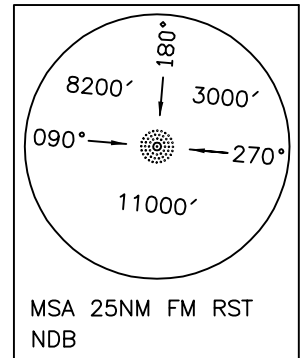
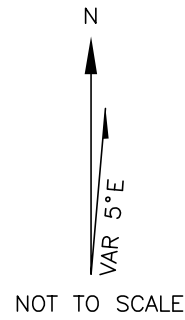
TRANSITION ALTITUDE  
4000 FT

TWR 122.700, 121.900  
ATIS 126.200

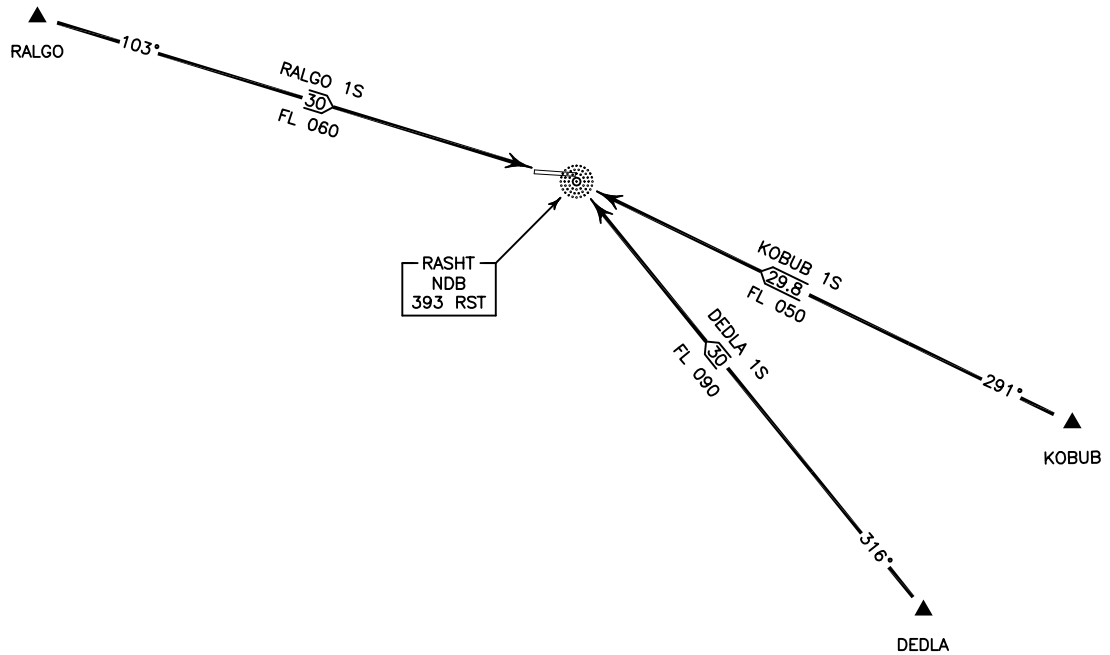
RASHT/SARDAR-E-JANGAL  
RWY 09/27  
RALGO 1S/ KOBUB 1S  
DEDLA 1S

ALL DIRECTIONS ARE MAGNETIC,  
LEVEL AND ELEVATIONS ARE IN FEET,  
DISTANCES ARE IN NAUTICAL MILES.

CTR class "D".



ACTUAL DESCENT CLEARANCE  
WILL BE AS DIRECTED BY ATC.



**RALGO 1S ARR:**

FM RALGO proceed to RST NDB, MAG TR 103°, DIST 30 NM, MNM level FL 60.

**KOBUB 1S ARR:**

FM KOBUB proceed to RST NDB, MAG TR 291°, DIST 29.8 NM, MNM level FL 50.

**DEDLA 1S ARR:**

FM DEDLA proceed to RST NDB, MAG TR 316°, DIST 30 NM, MNM level FL 90.