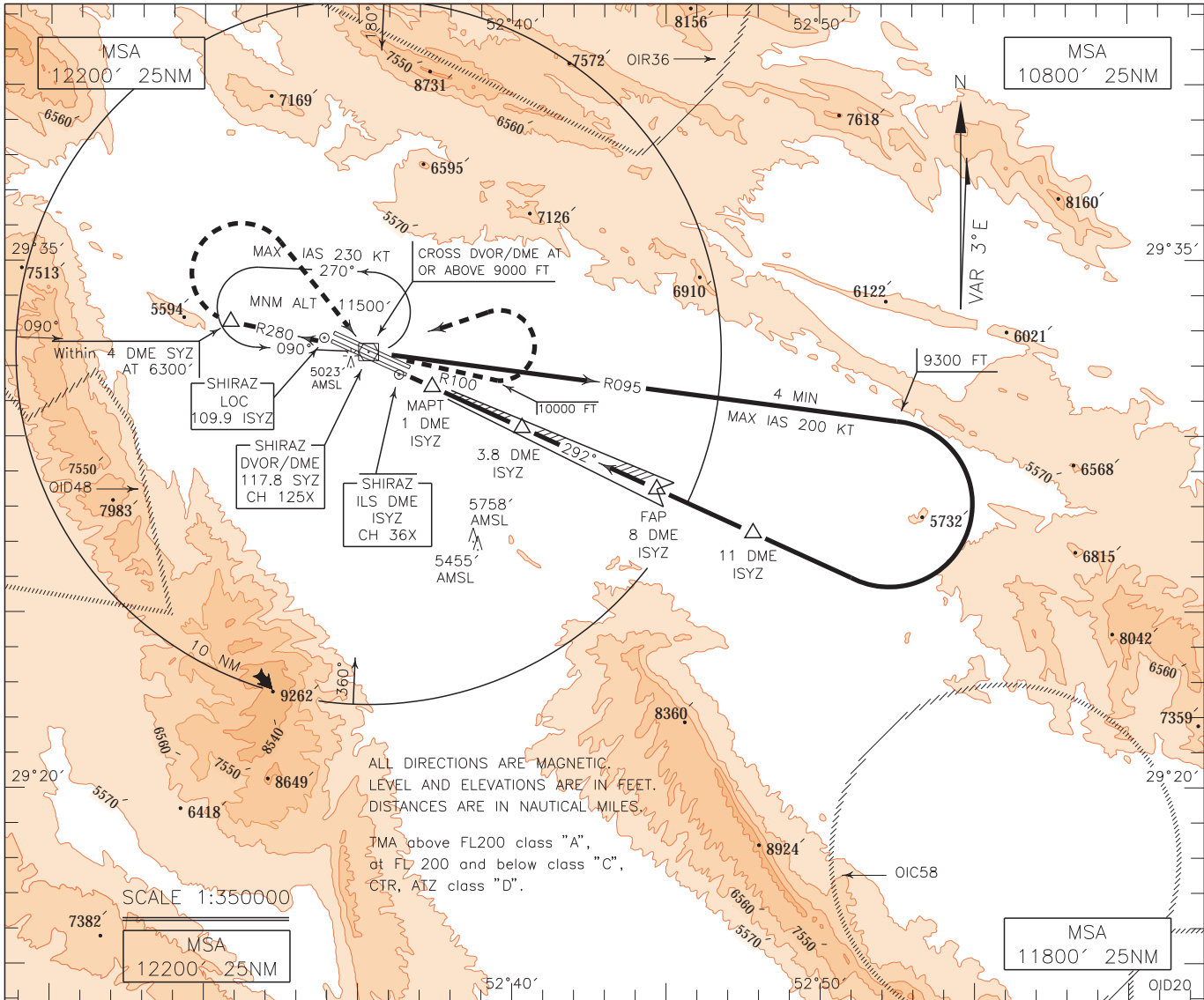


INSTRUMENT APPROACH CHART-ICAO
AERODROME ELEV. 4927 FT
HEIGHTS RELATED TO THR RWY 29L ELEV. 4870 FT

RADAR 119.000-125.400
APP 119.000-125.400
TWR 118.100
GND 121.900
ATIS 127.000

SHIRAZ/SHAHID DASTGHAIB
ILS Y
RWY 29L
CAT C/D

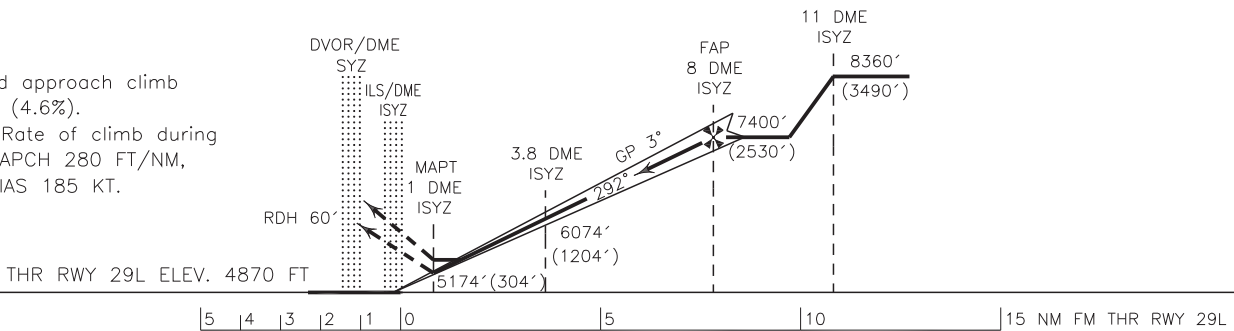


MISSED APPROACH: At 1 DME ISYZ climb straight to DVOR/DME, then continue climb on RDL 280 to 6300 FT, then turn right (within 4 DME SYZ) to cross overhead DVOR/DME at or above 9000 FT, then intercept RDL 100 to 10000 FT, then turn left to rejoin HLDG at 11500 FT.

TA 13000'

NOTE:

- 1-Missed approach climb gradient (4.6%).
- 2-MNM Rate of climb during missed APCH 280 FT/NM,
- 3-MAX IAS 185 KT.



NOTE:

- 1- Circling not authorized to the north of AD for ACFT CAT C/D.
- 2- Contour intervals are to be selected at 990 FT (300 M).

OCA(H)	A	B	C	D
Straight			5174' (304')	
GP INOP			5400' (530')	
Circling			6200' (1273')	6500' (1573')