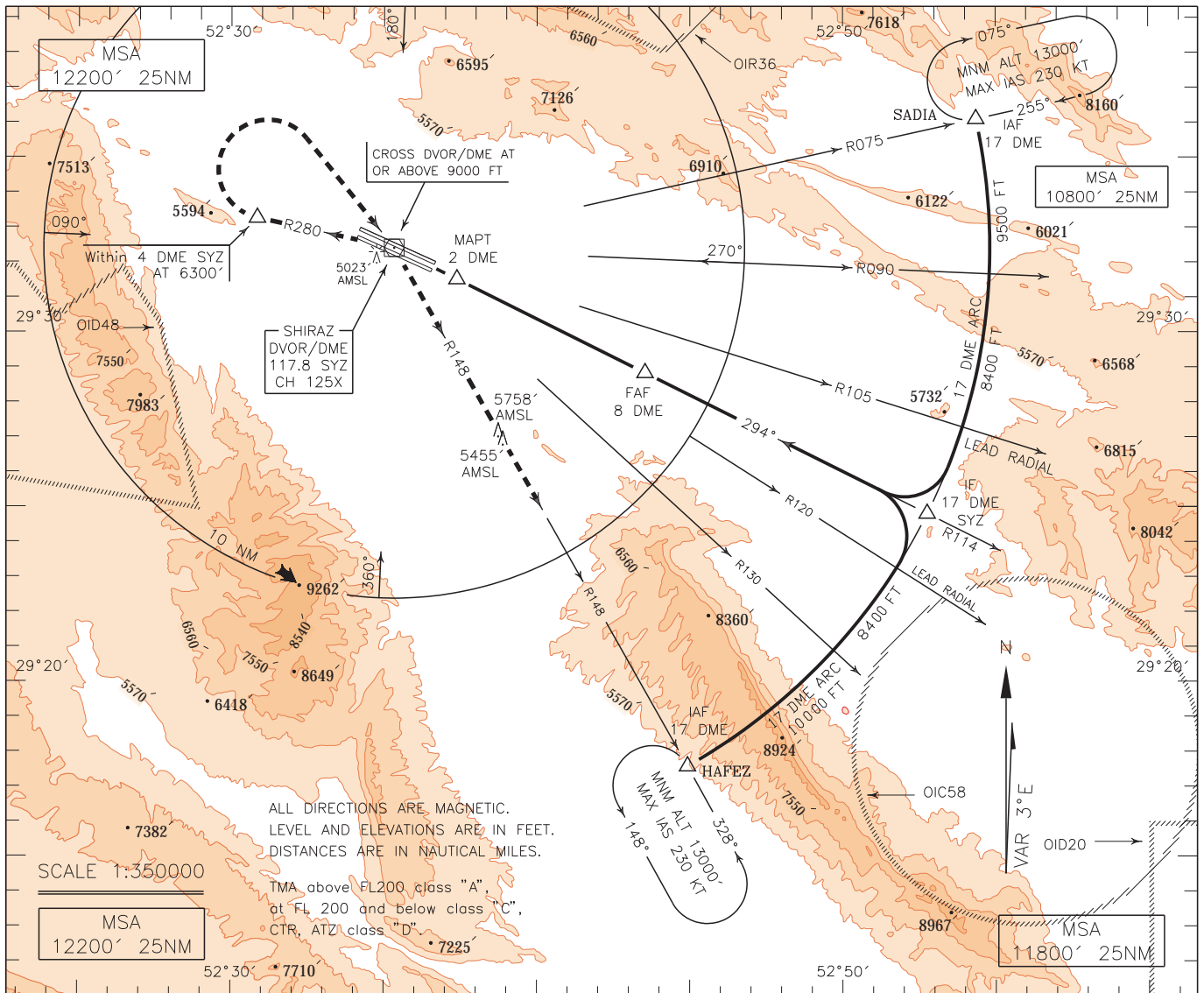


INSTRUMENT APPROACH CHART-ICAO  
AERODROME ELEV. 4927 FT  
HEIGHTS RELATED TO THR RWY 29L ELEV. 4870 FT

RADAR 119.000-125.400  
APP 119.000-125.400  
TWR 118.100  
GND 121.900  
ATIS 127.000

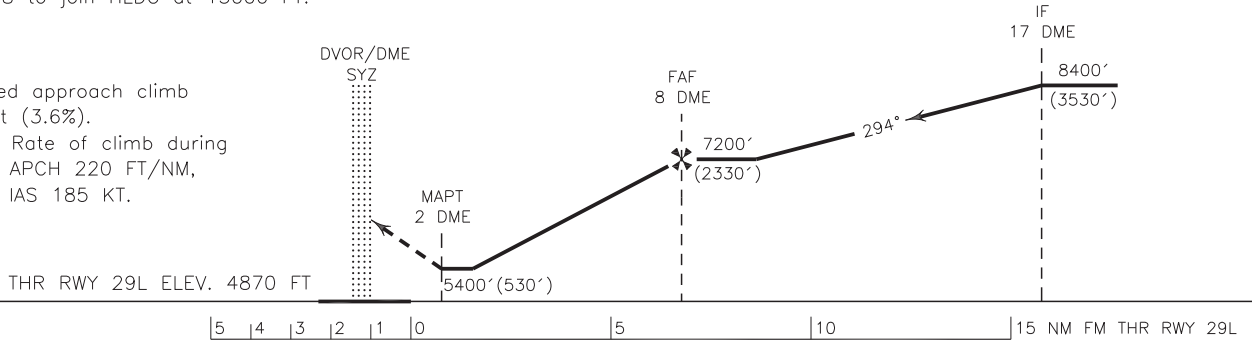
SHIRAZ/SHAHID DASTGHAIB  
VOR RWY 29L  
CAT A/B/C/D



MISSED APPROACH: At 2 DME climb straight to DVOR/DME, then continue climb on RDL 280 to 6300 FT, then turn right (within 4 DME SYZ) to cross overhead DVOR/DME at or above 9000 FT, then intercept RDL 148 to join HLDG at 13000 FT. TA 13000'

**NOTE:**

- 1-Missed approach climb gradient (3.6%).
- 2-MNM Rate of climb during missed APCH 220 FT/NM,
- 3-MAX IAS 185 KT.



**NOTE:**

- 1- Circle to land not authorized to the north of AD for ACFT CAT C/D.
- 2- Contour intervals are to be selected at 990 FT (300 M).

OCA(H)	A	B	C	D
Straight	5400'(530')			
Circling	5600'(673')	6200'(1273')	6500'(1573')	