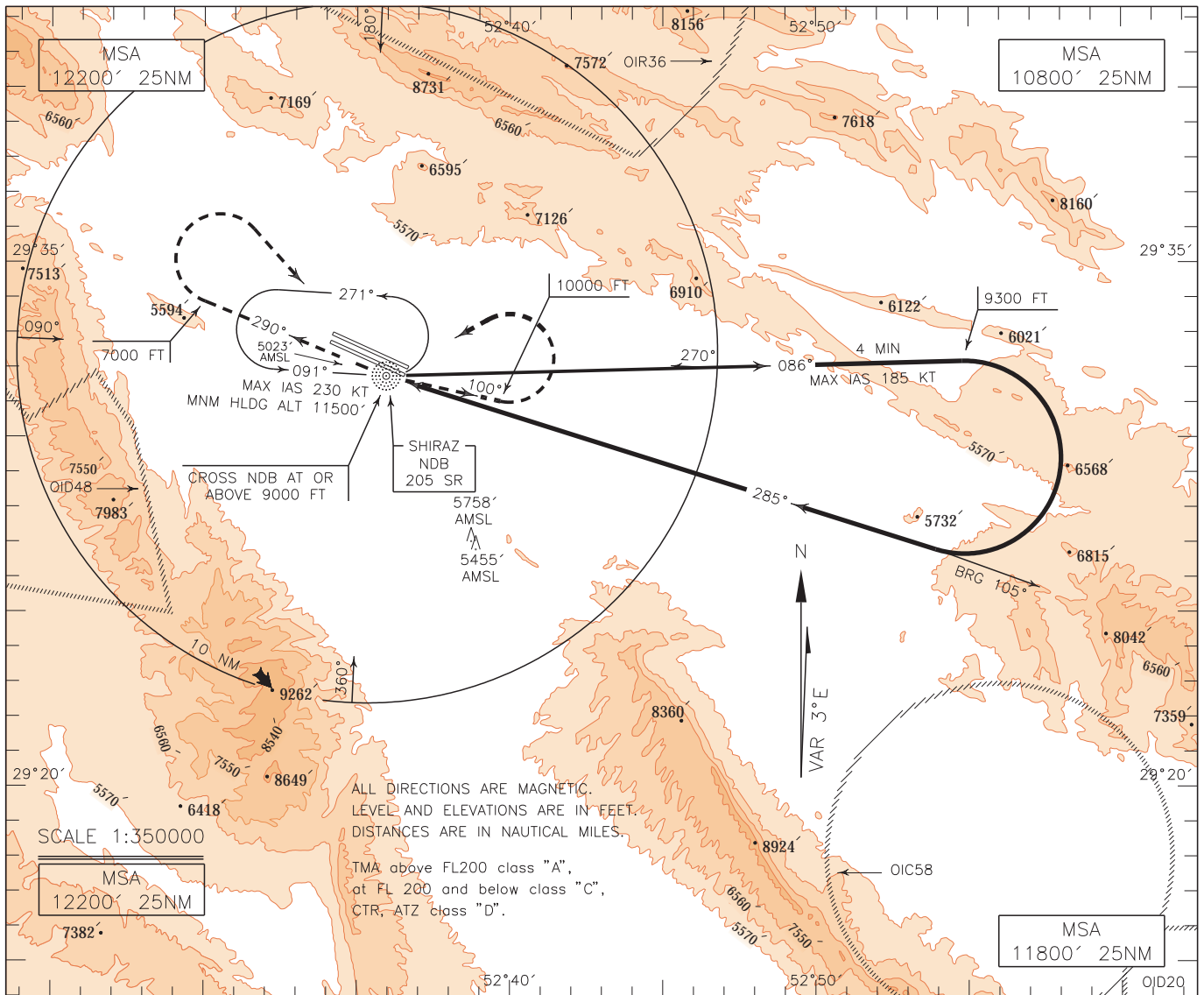


INSTRUMENT APPROACH CHART-ICAO
AERODROME ELEV. 4927 FT
HEIGHTS RELATED TO AERODROME ELEVATION

RADAR 119.000-125.400
APP 119.000-125.400
TWR 118.100
GND 121.900
ATIS 127.000

SHIRAZ/SHAHID DASTGHAIB
NDB A
CAT A/B/C/D



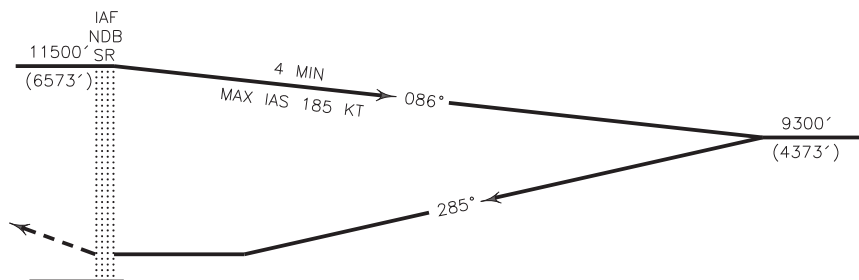
MISSED APPROACH: Over NDB climb on BRG 290° to 7000 FT, at 7000 FT or above turn right to cross overhead NDB at or above 9000 FT, then establish BRG 100° to 10000 FT, then turn left to rejoin HLDG at 11500 FT.

TA 13000'

NOTE:

- 1-Missed approach climb gradient (3.6%).
- 2-MNM Rate of climb during missed APCH 220 FT/NM,
- 3-MAX IAS 185 KT.

AD ELEV. 4927 FT



5 4 3 2 1 0 5 10 15 NM FM THR RWY 29L

NOTE:

- 1- Circling not authorized to the north of AD for ACFT CAT C/D.
- 2- Contour intervals are to be selected at 990 FT (300 M).

OCA(H)	A	B	C	D
Straight				
Circling	5600'(673')		6380'(1453')	