

STANDARD ARRIVAL CHART-
INSTRUMENT (STAR)-ICAO

TRANSITION ALTITUDE
13000 FT

RADAR	119.000-125.400
APP	119.000-125.400
TWR	118.100
GND	121.900
ATIS	127.000

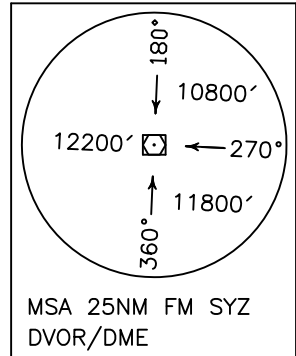
SHIRAZ/SHAHID DASTGHAIB
RWY 29L/R
VAVAS 1S

ALL DIRECTIONS ARE MAGNETIC.
LEVEL AND ELEVATIONS ARE IN FEET.
DISTANCES ARE IN NAUTICAL MILES.

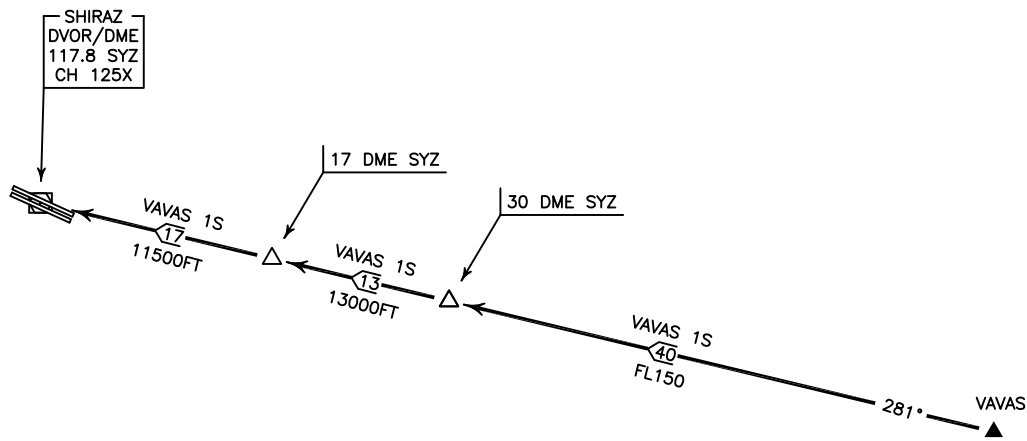
TMA above FL200 class "A",
at FL 200 and below class "C".
CTR and ATZ class "D".



NOT TO SCALE



ACTUAL DESCENT CLEARANCE
WILL BE AS DIRECTED BY ATC.



VAVAS 1S ARR:

FM VAVAS proceed to SYZ DVOR/DME, MAG TR 281°, DIST 70 NM, MNM level up to 30 DME FL 150, MNM ALT up to 17 DME 13000 FT, then 11500 FT.

NOTE : This procedure is not usable when OID28 is active.