

STANDARD ARRIVAL CHART-
INSTRUMENT (STAR)-ICAO

TRANSITION ALTITUDE
13000 FT

RADAR	119.000-125.400
APP	119.000-125.400
TWR	118.100
GND	121.900
ATIS	127.000

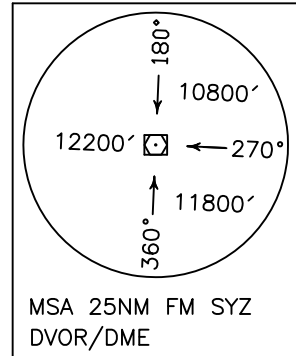
SHIRAZ/SHAHID DASTGHAIB
RWY 29L/R
KATUR 1R
KUGVU 1R

ALL DIRECTIONS ARE MAGNETIC.
LEVEL AND ELEVATIONS ARE IN FEET.
DISTANCES ARE IN NAUTICAL MILES.

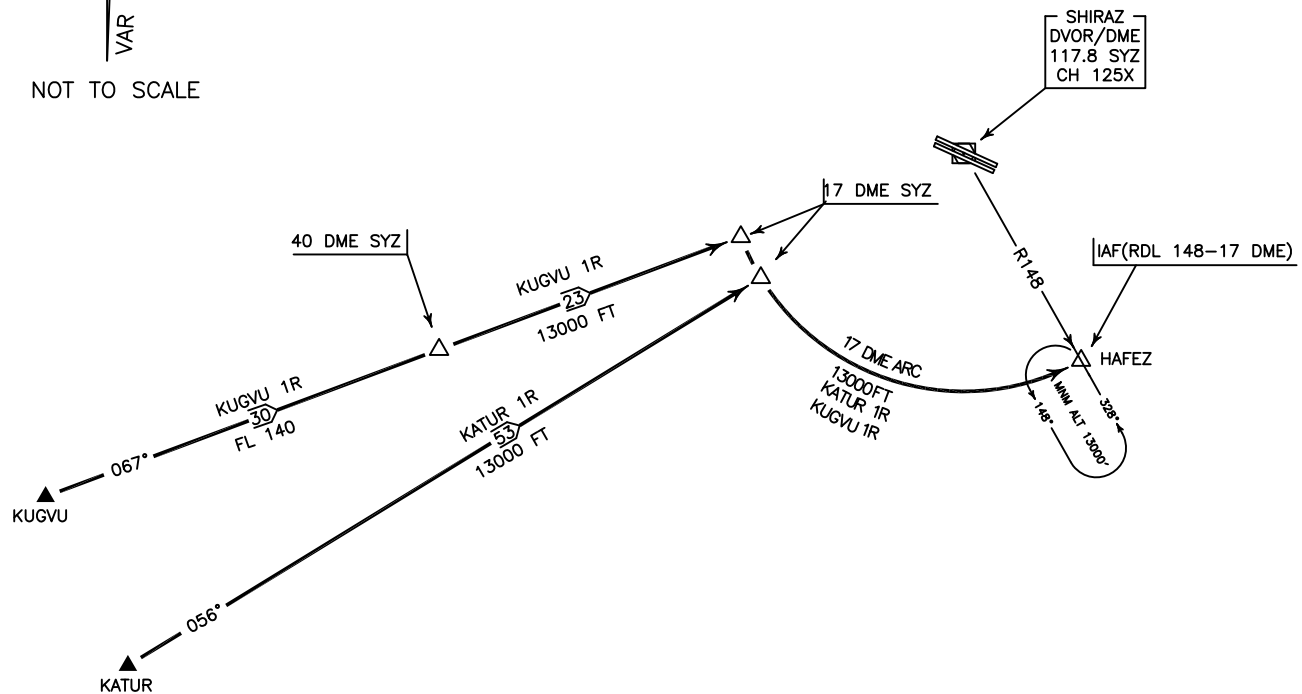
TMA above FL200 class "A",
at FL 200 and below class "C".
CTR and ATZ class "D".



NOT TO SCALE



ACTUAL DESCENT CLEARANCE
WILL BE AS DIRECTED BY ATC.



KATUR 1R ARR:

FM KATUR proceed to IAF HAFEZ (RDL 148-17 DME), MAG TR 056°, at 17 DME turn right for 17 DME ARC to IAF, MNM ALT 13000 FT.

KUGVU 1R ARR:

FM KUGVU proceed to IAF HAFEZ (RDL 148-17 DME), MAG TR 067°, at 17 DME turn right for 17 DME ARC to IAF, MNM level up to 40 DME FL 140, then MNM ALT 13000 FT.