

STANDARD ARRIVAL CHART-
INSTRUMENT (STAR)-ICAO

TRANSITION ALTITUDE
13000 FT

RADAR	119.000-125.400
APP	119.000-125.400
TWR	118.100
GND	121.900
ATIS	127.000

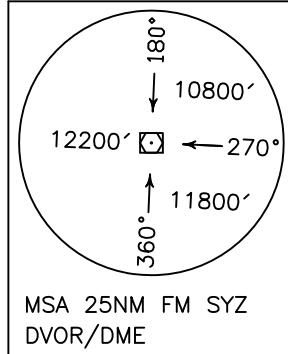
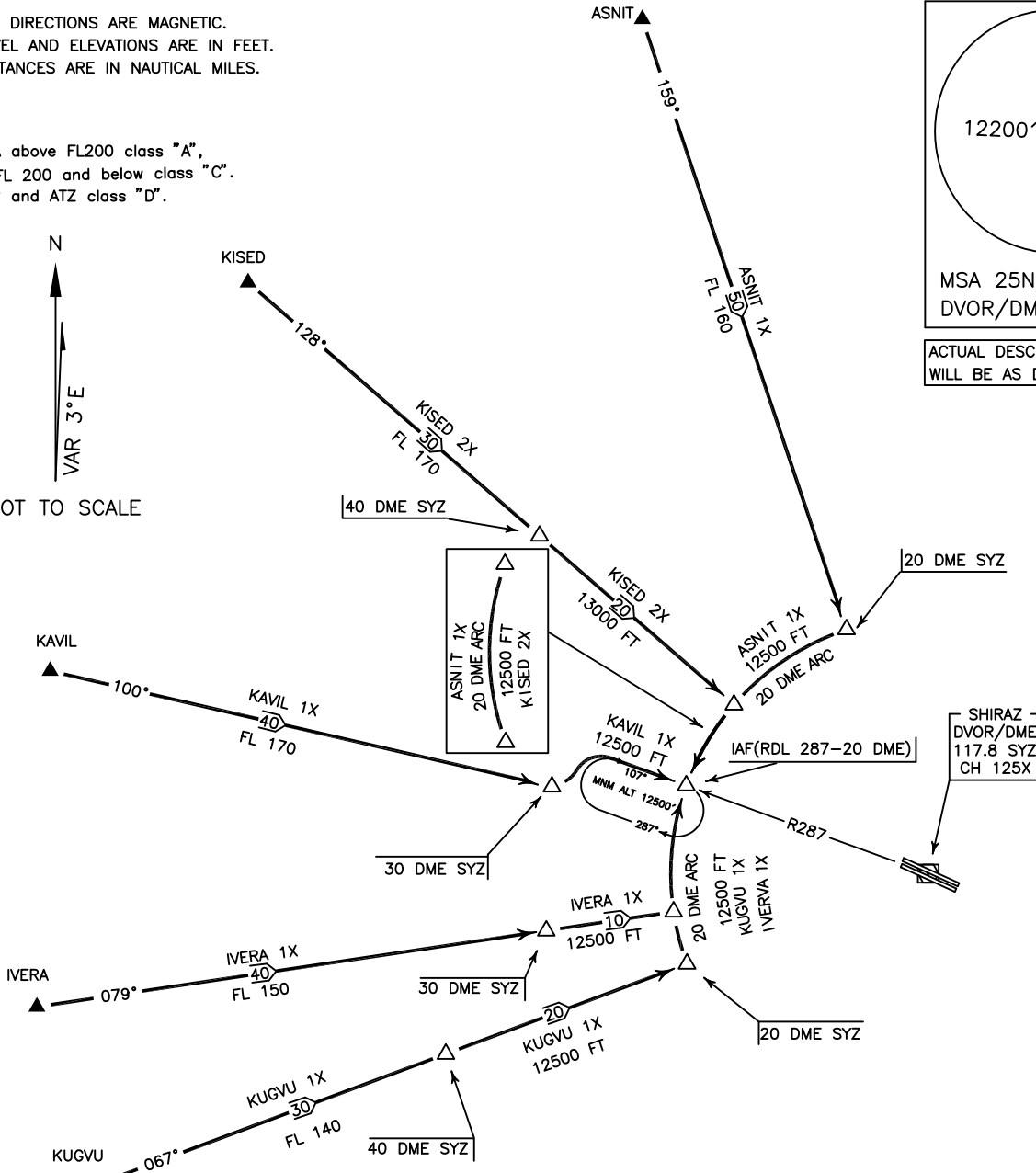
SHIRAZ/SHAHID DASTGHAIB
RWY 11L/R
KUGVU 1X, IVERA 1X
KAVIL 1X, KISED 2X, ASNIT 1X

ALL DIRECTIONS ARE MAGNETIC.
LEVEL AND ELEVATIONS ARE IN FEET.
DISTANCES ARE IN NAUTICAL MILES.

TMA above FL200 class "A",
at FL 200 and below class "C".
CTR and ATZ class "D".



NOT TO SCALE



MSA 25NM FM SYZ
DVOR/DME
ACTUAL DESCENT CLEARANCE
WILL BE AS DIRECTED BY ATC.

KUGVU 1X ARR:

FM KUGVU proceed to IAF (RDL 287-20 DME), MAG TR 067°, DIST 50 NM, at 20 DME turn left for 20 DME ARC to IAF, MNM level up to 40 DME FL 140, then MNM ALT 12500 FT.

IVERA 1X ARR:

FM IVERA proceed to IAF (RDL 287-20 DME), MAG TR 079°, DIST 50 NM, at 20 DME turn left for 20 DME ARC to IAF MNM level up to 30 DME FL 150, then MNM ALT 12500 FT,

KAVIL 1X ARR:

FM KAVIL proceed to IAF (RDL 287-20 DME), MAG TR 100°, DIST 50 NM, at 30 DME turn left intercept RDL 287, MNM level up to 30 DME FL 170, then MNM ALT 12500 FT,

KISED 2X ARR:

FM KISED proceed to IAF (RDL 287-20 DME), MAG TR 128°, DIST 50 NM, at 20 DME turn right for 20 DME ARC to IAF, MNM level up to 40 DME FL 170, MNM ALT up to 20 DME 13000 FT, then MNM ALT 12500 FT.

ASNIT 1X ARR:

FM ASNIT proceed to IAF (RDL 287-20 DME), MAG TR 159°, DIST 50 NM, at 20 DME turn right for 20 DME ARC to IAF, MNM level up to 20 DME FL 160, then MNM ALT 12500 FT.