

STANDARD ARRIVAL CHART-
INSTRUMENT (STAR)-ICAO

TRANSITION ALTITUDE
13000 FT

RADAR	119.000-125.400
APP	119.000-125.400
TWR	118.100
GND	121.900
ATIS	127.000

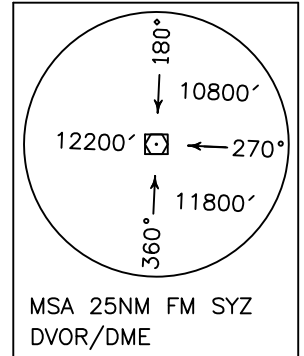
SHIRAZ/SHAHID DASTGHAIB
RWY 29L/R
LAGSA 1P/1S

ALL DIRECTIONS ARE MAGNETIC.
LEVEL AND ELEVATIONS ARE IN FEET.
DISTANCES ARE IN NAUTICAL MILES.

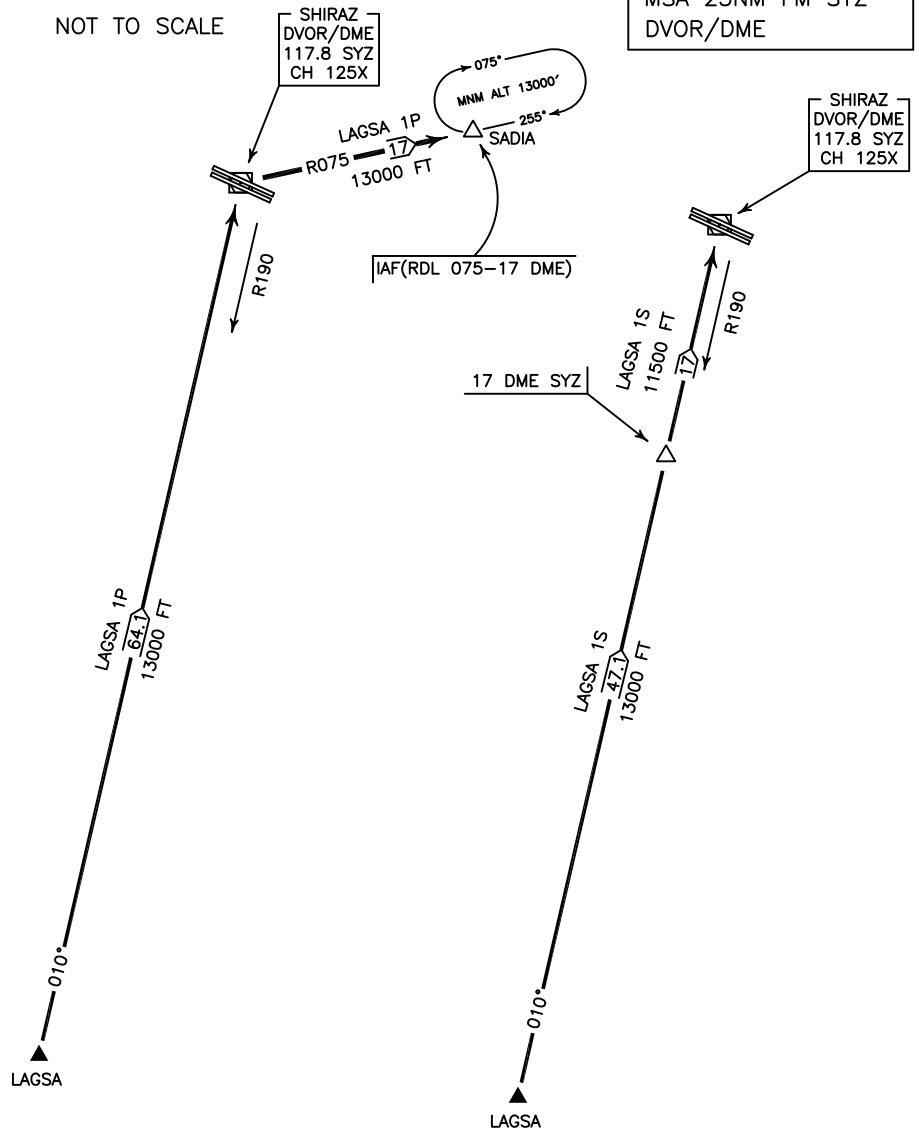
TMA above FL200 class "A",
at FL 200 and below class "C".
CTR and ATZ class "D".



ACTUAL DESCENT CLEARANCE
WILL BE AS DIRECTED BY ATC.



NOT TO SCALE



LAGSA 1P ARR:

FM LAGSA proceed to IAF (RDL 075-17 DME) via overhead SYZ DVOR/DME, proceed on MAG TR 010°, DIST 64.1 NM, up to overhead, then turn right on RDL 075 to IAF, DIST 17 DME, MNM ALT 13000 FT.

LAGSA 1S ARR:

FM LAGSA proceed to SYZ DVOR/DME, MAG TR 010°, DIST 64.1 NM, MNM ALT up to 17 DME 13000 FT, then 11500 FT.