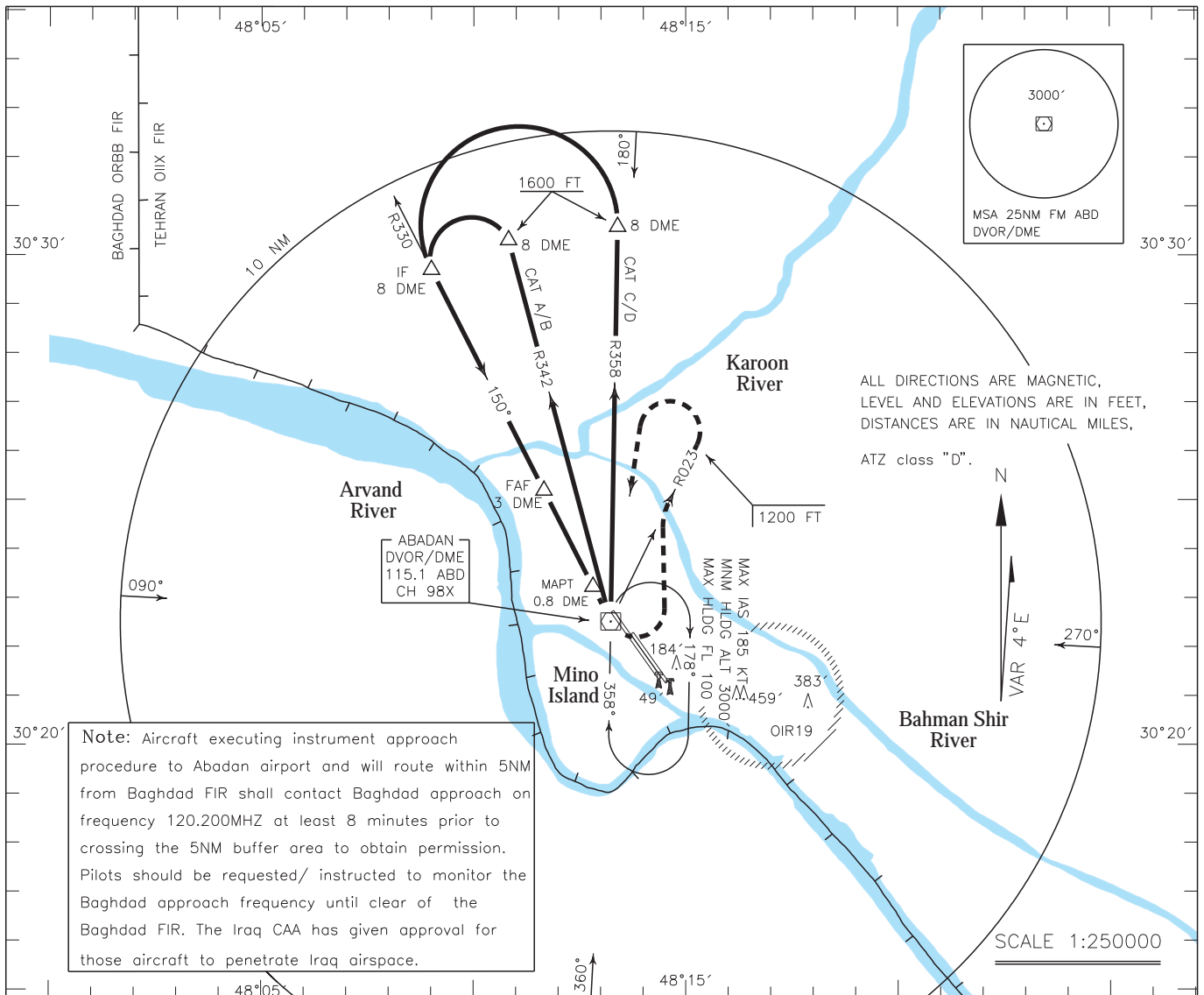


INSTRUMENT  
APPROACH  
CHART-ICAO

AERODROME ELEV. 8 FT  
HEIGHTS RELATED TO  
AERODROME ELEVATION

TWR 118.100  
121.800  
ATIS 126.850

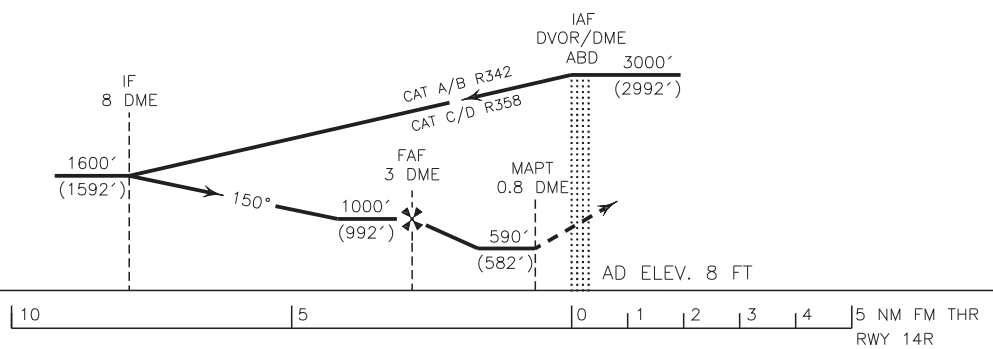
ABADAN  
VOR Y RWY 14R  
CAT A/B/C/D



**Note:** Aircraft executing instrument approach procedure to Abadan airport and will route within 5NM from Baghdad FIR shall contact Baghdad approach on frequency 120.200MHZ at least 8 minutes prior to crossing the 5NM buffer area to obtain permission. Pilots should be requested/ instructed to monitor the Baghdad approach frequency until clear of the Baghdad FIR. The Iraq CAA has given approval for those aircraft to penetrate Iraq airspace.

**MISSED APPROACH:** At 0.8 DME climb straight to DVOR/DME, then turn left to intercept RDL 023 to 1200 FT, then turn left to rejoin HLDG at 3000 FT.

TA 5000'



**NOTE:**  
Circling not authorized to the west, north west, south west of AD and beyond TEHRAN FIR.

OCA(H)	A	B	C	D
Straight	650' (642')			
Circling	755' (747')		854' (846')	